

Bell Transformers



Grothe transformers “Made in Germany” bell transformers are optimised for the short term use in residential applications such as door bells, gongs, alarm bells and door openers and safety transformers in continuous use.

Grothe bell and safety transformers are protected with a PTC, which switches the transformer off on short circuit and overload on the primary side. On switching of the

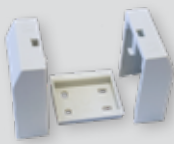
PTC through overload or short circuit, the transformer needs to be taken off the load for at least 1 minute in order for it to be put back into service.

All transformers comply with the highest environmental protection regulations, are checked according to EN61558 and are certified according to VDE and KEMA (with ENEC mark for use in Europe).

Standard Bell Transformers



GT 3173



GT 36 AP



GT 3173 S

Model	Order No	Description
GT 3148	14201	Bell transformer <ul style="list-style-type: none"> • Primary: 230-240V~ (50 Hz) • 8V~ (1,0A) • 90 x 36 x 55mm (corresponds to 2 installation modules)
GT 3139	14039	Bell transformer function as above but 8/12V~ (1,5/1,0A)
GT 3158	14068	Bell transformer function as above but 12V~ (1,0A)
GT 3173	14073	Bell transformer function as above but 4/8/12V~ (2,0/2,0/1,5A)
GT 3182	14082	Bell transformer function as above but 8/12/24V~ (2,0/1,3/0,6A)
GT 36 AP	14936	Surface-mount installation set

With power switch model

Model	Order No	Description
GT 3148 S	14211	Bell transformer <ul style="list-style-type: none"> • Primary: 230-240V~ (50 Hz) • 8V~ (1,0A) • 90 x 36 x 55mm (corresponds to 2 installation modules)
GT 3139 S	14049	Bell transformer function as above but 8/12V~ (1,5/1,0A)
GT 3173 S	14083	Bell transformer function as above but 4/8/12V~ (2,0/2,0/1,5A)