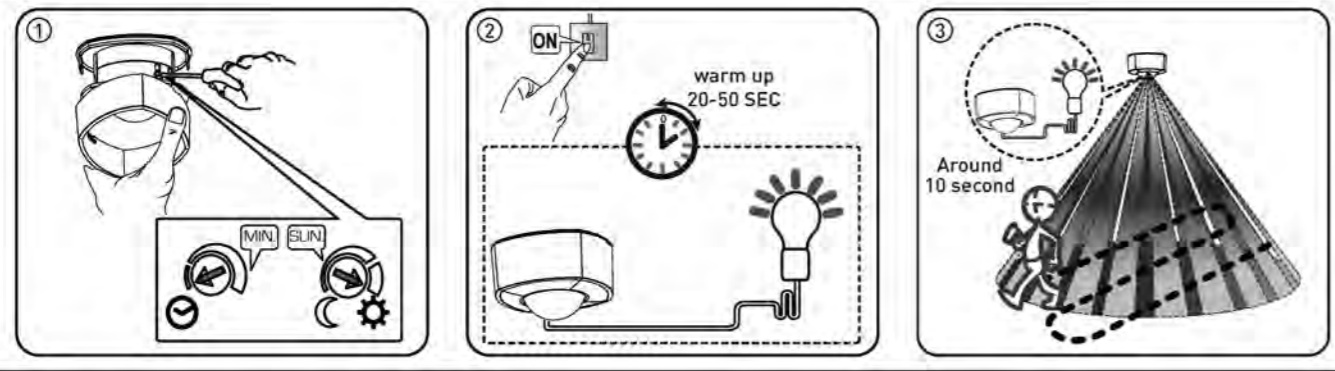
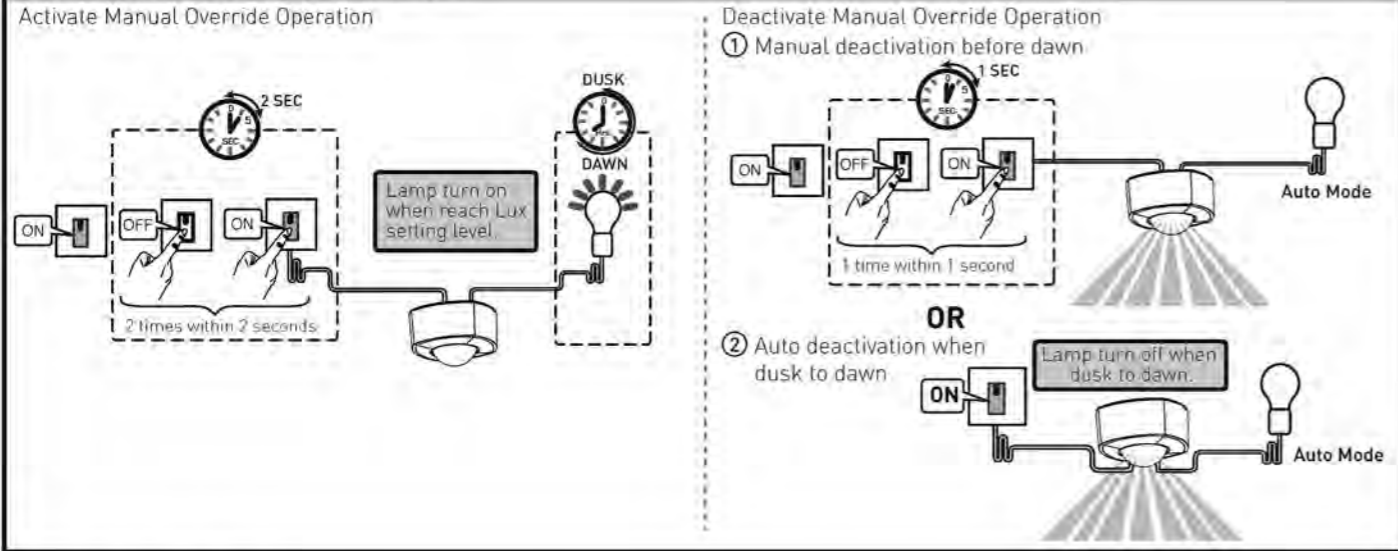


WALK TESTING



MANUAL OVERRIDE OPERATION



SWITCHABLE LOAD

	Max 2000W		Max 120W
	Max 500W		Max 110W
	Max 400W		Max 75W

TECHNICAL SPECIFICATIONS:

Detection Range: Up to 6 metres diameter (3m Radius) at mounting height of 2.5m

Detection Range: 360°

Power Supply: 220 - 240 VAC / 50 Hz

Max Switchable Load: Max load current 6A
 Incandescent / Halogen Max 2000W
 Fluorescent lamp (magnetic) Max 500W
 Fluorescent lamp (electronic ballast) Max 400W
 Low energy (CFL) Max 120W
 LED lamp Max 110W
 Fan Max 75W

Time On Adjustment: 5 seconds - 15 minutes

Dusk Level Adjustment: Day & night or night only operation

Operating temperature: -20 to 40°C

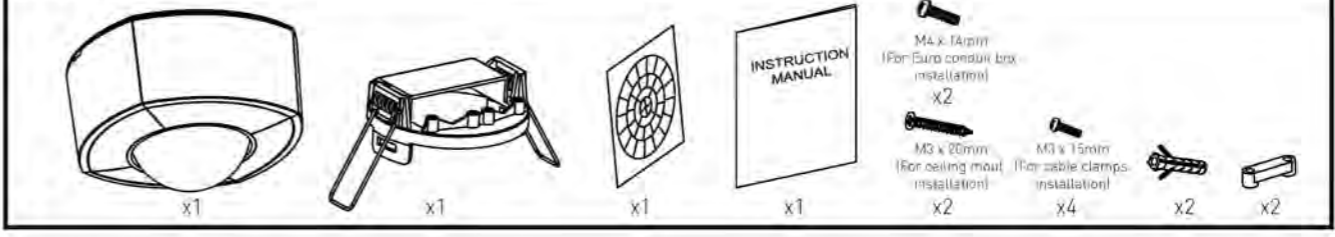
Environment Protection:
 For ceiling mount - IP44
 For flush mount - IP44 (at sensor portion only)
 - IP20 (ceiling board onwards)

DA'SEL DS200 360° Dual Mount PIR Sensor
INSTALLATION AND OPERATING INSTRUCTIONS

Only suitably qualified personnel should install this equipment



PACK CONTENTS

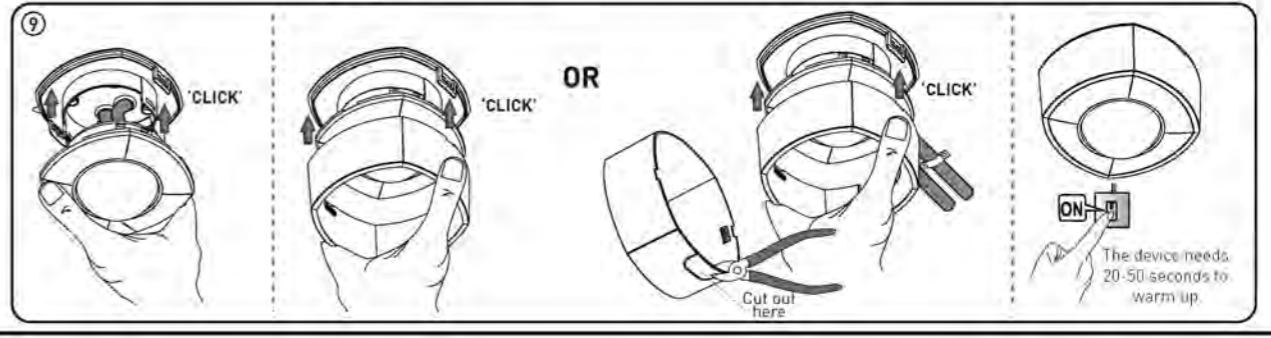
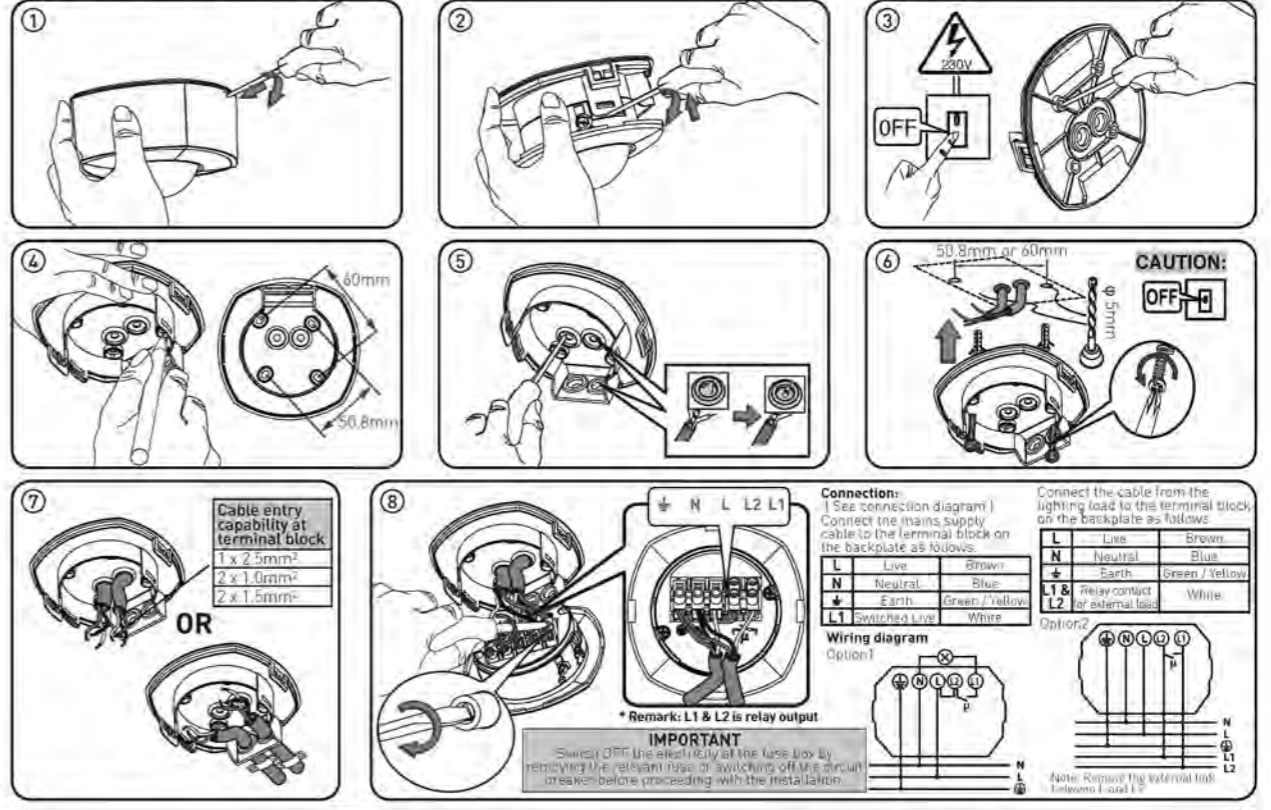


REQUIRED



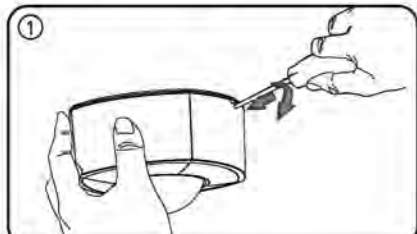
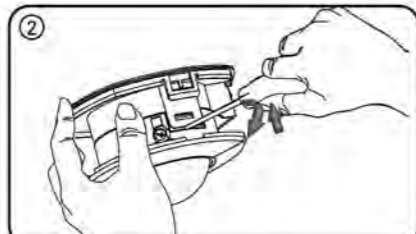
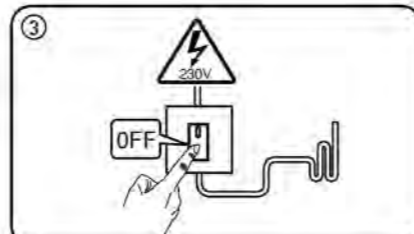
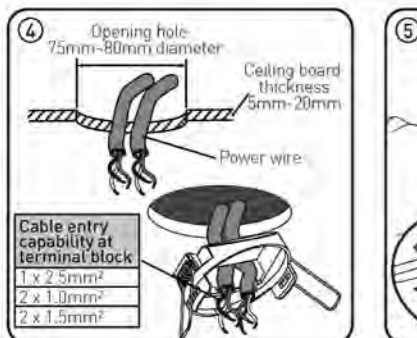
MOUNTING/ INSTALLATION STEPS

Surface Mount

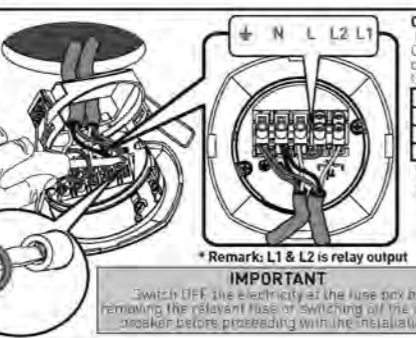


MOUNTING/ INSTALLATION STEPS

Flush Mount

Opening hole 75mm-80mm diameter
Ceiling board thickness 5mm-20mm
Power wire
Cable entry capability at terminal block
1 x 2.5mm²
2 x 1.0mm²
2 x 1.5mm²




Connection:
(See connection diagram) Connect the mains supply cable to the terminal block on the backplate as follows:

L	Live	Brown	
N	Neutral	Blue	
↓	Earth	Green / Yellow	
L1 & L2	Relay/contact for external load	White	

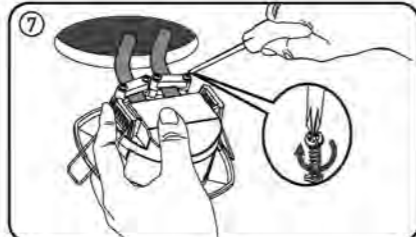

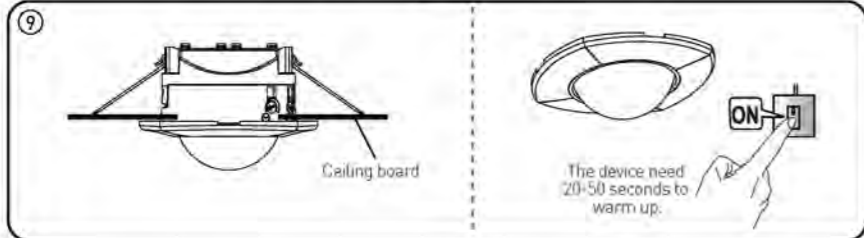
Wiring diagram
Option1
Option2

* Remark: L1 & L2 is relay output

IMPORTANT
Switch OFF the electricity at the fuse box by removing the relevant fuse or switching off the circuit breaker before proceeding with the installation.



'CLICK'

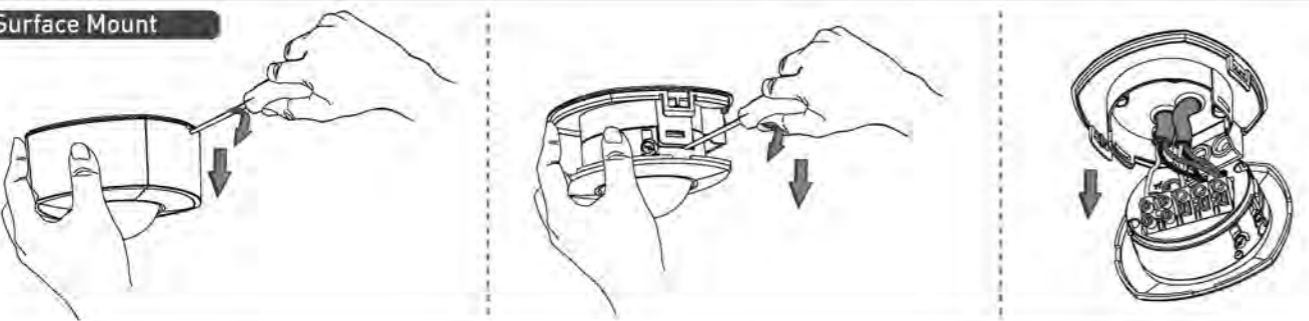




Ceiling board

The device need 20-50 seconds to warm up.

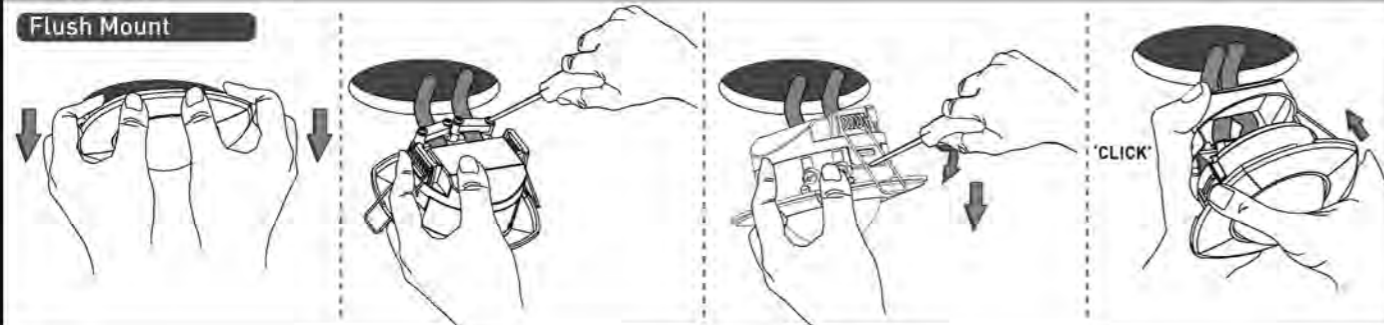
REMOVING

Surface Mount




REMOVING

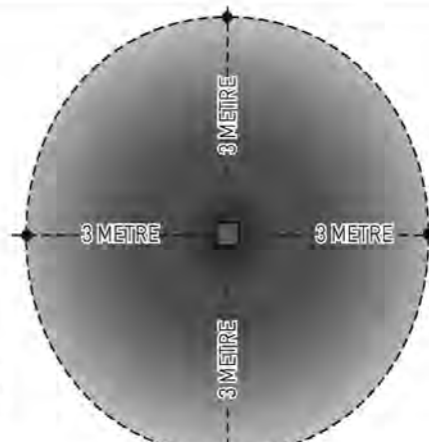
Flush Mount



MOTION SENSOR DETECTION

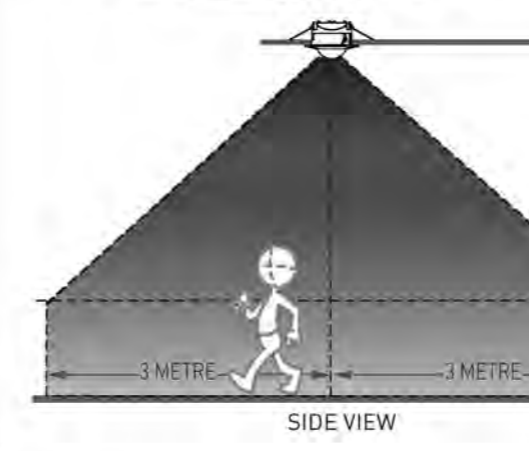


When mounting at 2.5m height



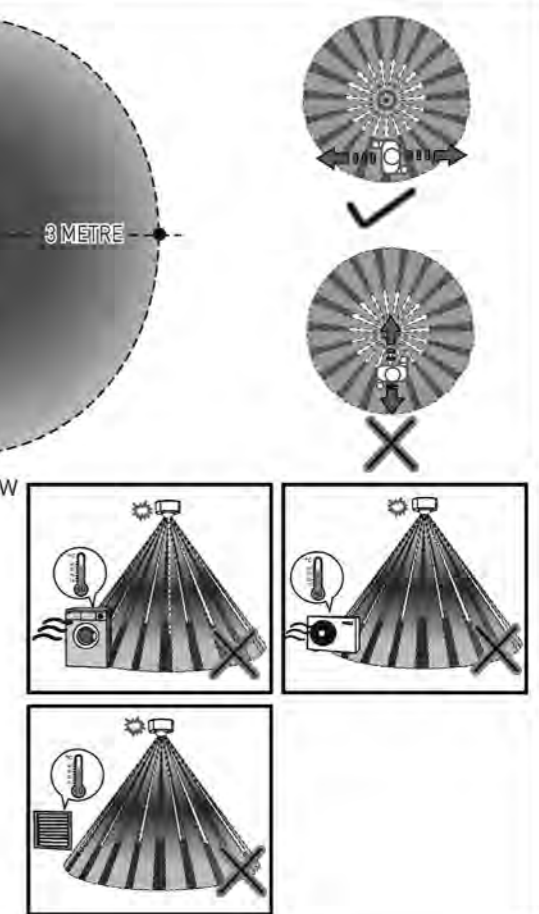
3 METRE
3 METRE
3 METRE
3 METRE

TOP VIEW




2.5 M
3 METRE
3 METRE

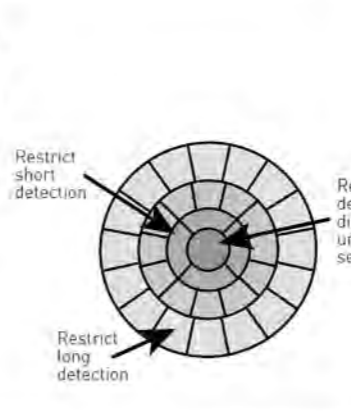
SIDE VIEW



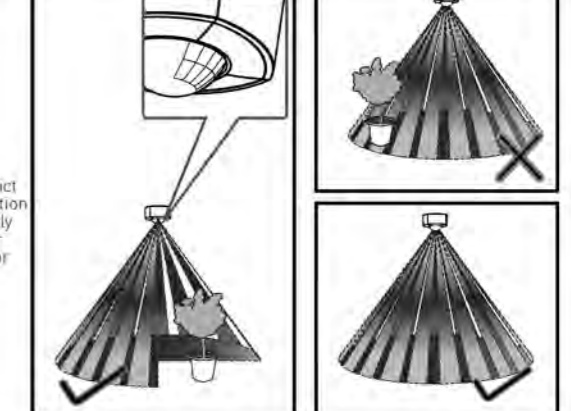
LENS MASK



Lens mask sticker



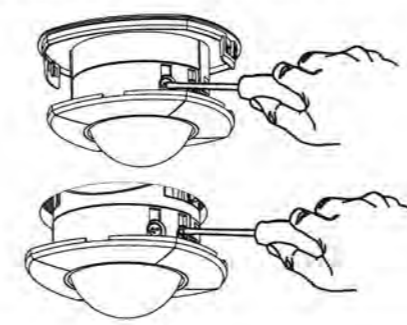
Restrict short detection
Restrict long detection
Restrict detection directly under sensor



TESTING & OPERATION

Adjustment

-Can be adjusted by flat head screwdriver.



LUX

ON-TIME

5 SEC
15 MIN