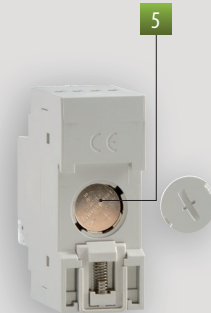


Digital modular time switches for the management of electric loads in time with maximum precision. The NFC interface allows coupling with smartphone and tablet to transfer the programs made on the smartphone thanks to the dedicated app. The rear cover of the instrument allows for the replacement of the depleted battery.

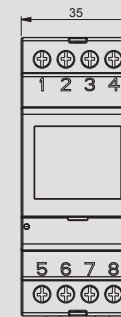
## MEMO DW / DW 2 MEMO Y / Y2

- 1 Wide backlit display to visualize date, time and relay status
- 2 Container: 2 modules DIN
- 3 Text guide
- 4 Sealable cover
- 5 Cover on the back for battery replacement

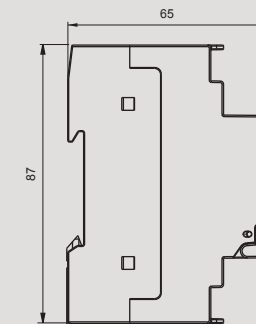


## DIMENSIONS (mm)

### Front view

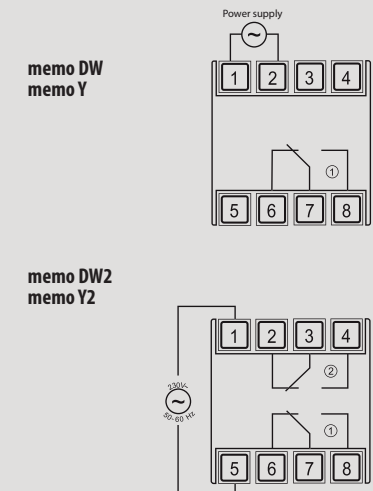


### Side view



## CONNECTION DIAGRAM

### Diagram



## TIME AND MANAGEMENT

### DAILY/WEEKLY/MONTHLY/YEARLY WITH NFC INTERFACE

- Power supply: 230 V 50/60 Hz
- Version: 1 or 2 channels
- Program ON, OFF, PULSE (from 1 to 59 seconds), HOLIDAY
- Maximum number of storable programs for each channel: 120
- Random switching function of the outputs
- Manual override of the relay (temporary or permanent)
- Automatic update of summer time
- Battery life: 5 years (replaceable)
- Depleted battery signal
- NFC type 5 interface
- Keypad lock by password
- Menu in 5 languages: Italian, English, Spanish, German, French

### What you can do with the app

- Create programs directly on the smartphone
- Transfer the created programs on multiple memo clocks
- Acquire programs from a memo and copy them to other memo (copy / paste)
- Switch relay outputs manually
- Acquire settings (date, time, coordinates) automatically and transfer them to the memo



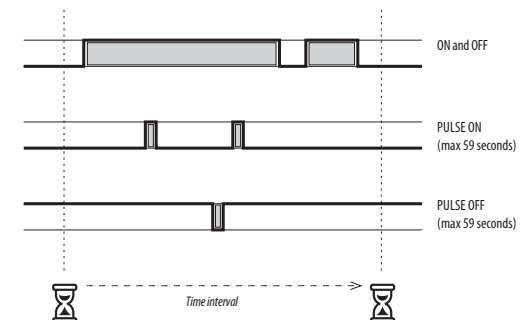
Code	Model	Description	relays n.
VE339800	memo DW	Time switch daily/weekly with NFC interface	1
VE341400	memo DW2	Time switch daily/weekly with NFC interface	2
VE340600	memo Y	Time switch daily/weekly/monthly/yearly with NFC interface	1
VE342200	memo Y2	Time switch daily/weekly/monthly/yearly with NFC interface	2

## TECHNICAL INFORMATION

### GENERAL CHARACTERISTICS

Power supply	V AC	230 (-10% ÷ +10%) 50/60 Hz
Absorption	VA	8 (2)
Output	Memo DW / Y Memo DW2 / Y2	1 relay in monostable change-over 2 relays in monostable change-over
Capacity 250 V AC	A	16 (10)
Incandescent lamps	W	2000
Fluorescent lamps (compensated)	VA	250
Low voltage halogen lamps	VA	1000
Halogen lamps (at 240V)	W	2000
Low voltage lamps (CFL)	VA	200
Low voltage lamps (Downlights)	VA	200
LED	VA	25
Battery life		5 years (CR-2032 Lithium battery)
Charge reserve (for battery replacement)		1 minute
Switchings in case of power failure		No
Programming resolution		1 minute
Storable programs		120
Operating precision		± 0.5 seconds/day at 25°C
Operating temperature	°C	-20 ÷ +40
Storage temperature	°C	-10 ÷ +70
Degree of protection		IP20 / IP41 (on the front)

### Programs



### REFERENCE STANDARDS

Compliance with Community Directives:  
2014/35/EU (LVD) • 2014/30/EU (EMCD)  
is declared with reference to the following  
standards:  
EN 60730-2-7 • EN 55014-2 • EN 55014-1