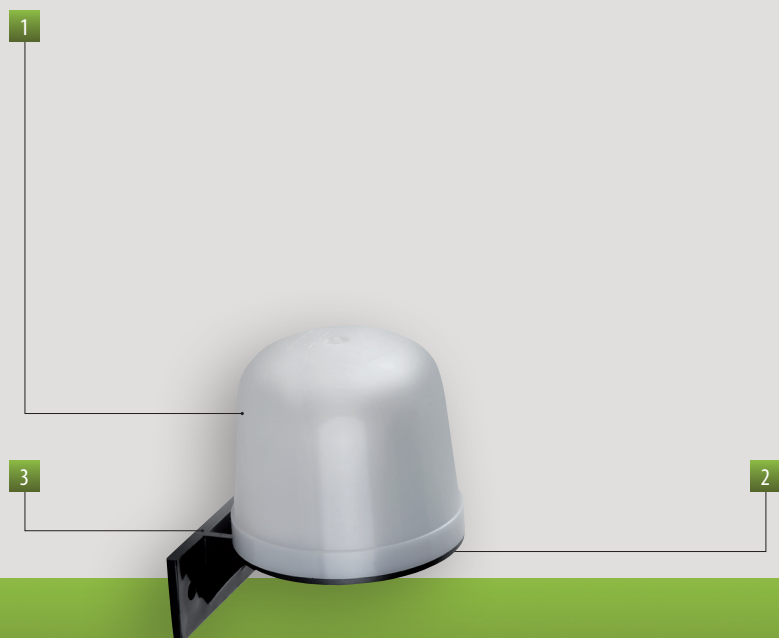


Twilight switches

VELUX / VEREG

Twilight switches built for wall-mounting installation.



- 1 Cover: shockproof polycarbonate resin
- 2 Grommets for cables with sheathing maximum diameter 10.5 mm
- 3 Wall fastening bracket

WALL-MOUNTING TWILIGHT SWITCHES

- Connectable load:
Incandescent lamps: 800 W / 230 V ($\cos\phi \geq 0.8$)
Fluorescent lamps: 360 W / 230 V ($\cos\phi \geq 0.8$)
- Output: relay with NO contact
- Relay capacity: 10 A / 250 V AC on resistive load
- Sensitivity: 3 ÷ 70 lux
- Hysteresis: 1 ÷ 10 lux (for Velux: 4 lux fixed)
- Delay: 0 ÷ 40 s (for Velux: 10 s fixed)
- VELUX: terminal block for conductors with a maximum section of 4 mm²
- VEREG: terminal block for conductors with a maximum section of 2.5 mm²



GENERAL CHARACTERISTICS

Power supply	V AC	230 (-15% ÷ +10%) - 50 / 60 Hz	
Absorption	VA (W)	8 (1)	
Fastened		Wall	
Contact capacity 250 V AC	A	10 (resistive load)	
Sensitivity	lux	3 ÷ 70	
Intervention time:	- Velux	s	10
	- Vereg	s	0 ÷ 40
Hysteresis factor:	- Velux	lux	4
	- Vereg	lux	1 ÷ 10
Protection	IP	54	
Operating temperature	°C	0 ÷ +50	
Storage temperature	°C	-10 ÷ +60	
Relative humidity	RH	20% ÷ 90% non condensing	

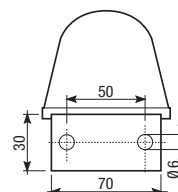
Code	Model	Fastened	Sensitivity
VJ57030000	Velux	Wall	3 ÷ 70 lux
VJ57110000	Vereg	Wall	3 ÷ 70 lux

REFERENCE STANDARDS

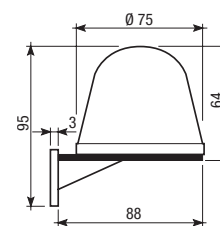
Compliance with Community Directives: 2006/95/EC (Low Voltage) and 204/108/EC (E.M.C.) is declared with reference to the following standards: • Safety and E.M. Compatibility: 60669-2-1

DIMENSIONS (mm)

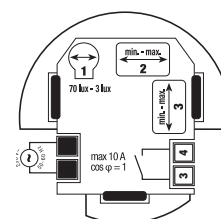
Front view



Side view



CONNECTION DIAGRAM



- 1 Sensitivity regulation
- 2 Hysteresis regulation (only VEREG)
- 3 Intervention time regulation (only VEREG)