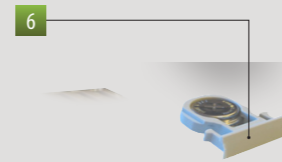


Electromechanical time switches

Electromechanical time switches with daily or weekly programming by trippers for domestic use. The NiMH battery allows a charge reserve of 150 hours and it can be replaced once depleted by opening the front cover of the instrument.



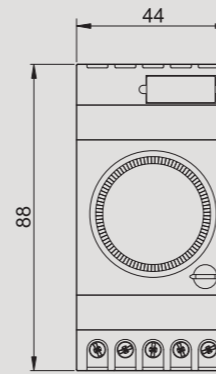
- 1 Trippers for the programming of activation time
- 2 Switch for the choice of the operating mode
- 3 Dial for time and minutes regulation
- 4 Sealable cover
- 5 Container: 2.5 DIN modules
- 6 Battery drawer (for replacement)



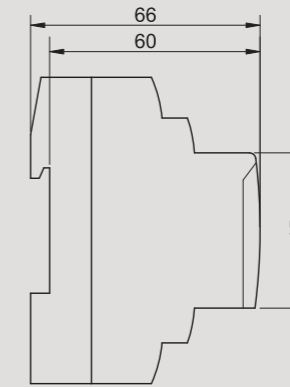
ARVO

DIMENSIONS (mm)

Front view

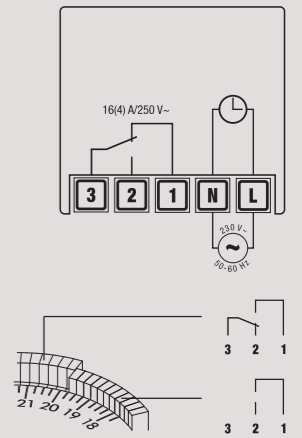


Side view



CONNECTION DIAGRAM

Diagram



TECHNICAL INFORMATION

GENERAL CHARACTERISTICS

Power supply	V AC	230 (-15% ÷ +10%)
Frequency	Hz	50 / 60
Absorption	W	0.5
Output relays capacity		16(4) A / 250 Vac
Operating precision		± 1 second/day at 23°C
Quadrant type	- ARVO-D	96 trippers
	- ARVO-W	84 trippers
Minimum intervention time:	- ARVO-D	15 minutes
	- ARVO-W	2 hours (120 minutes)
Intervention precision:	- ARVO-D	±5 minutes
	- ARVO-W	± 30 minutes
Charge reserve	h	150 (NiMH battery chargeable and replaceable)
Operating temperature		-10 °C ÷ +50 °C
Class of protection		II
Degree of protection		IP20
Container		2.5 DIN module

REFERENCE STANDARDS

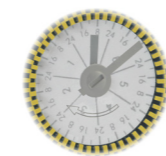
Compliance with Community Directives: 2006/95/EC (Low Voltage) and 2004/108/EC (E.M.C.) is declared with reference to the following Harmonized Standards: - EN 60730-2-7

DAILY/WEEKLY TIME SWITCHES

- Power supply: 230Vac (-15% ÷ +10%)
- Output relays capacity: 16(4) A / 250 Vac
- Operating mode:
 - O** always OFF
 - A** automatic (according to the set programming with the trippers)
 - I** always ON
- NiMH battery (V80H type) chargeable and replaceable by the front cover of the instrument
- Charge reserve of 150 hours



- ARVO-D**
- daily programming
 - 24 hours quadrant with 96 trippers
 - every tripper covers 0,25 hours (15 minutes)



- ARVO-W**
- weekly programming
 - 7 days quadrant with 84 trippers
 - every tripper covers 2 hours (120 minutes)

TIME MANAGEMENT

CONNECTABLE LOADS

Incandescent		3000 W
Fluorescent		1200 VA
Low voltage halogen		2000 VA
Halogen (230 V~)		3000 W
Low consumption lamp (CFL)		1000 VA
Low consumption lamp (CFL)		900 VA
Led		1000 VA

Code	Model	Description
VP882500	ARVO-D	Daily electromechanical time switch
VP883300	ARVO-W	Weekly electromechanical time switch

Energy Conservation Solutions Pty Ltd
 Exclusive Distributor for VEMER in Australia
 Locations: VIC/TAS, NSW, QLD, ACT, SA/NT & WA
 Phone: 1300 306 136
 For contact details visit: www.ecs.net.au