

DATA SHEET

OFL SUN LED 50W 5K white

Order description

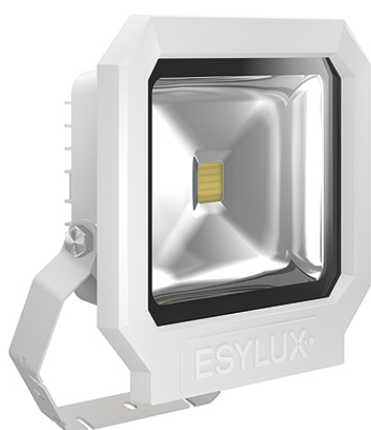
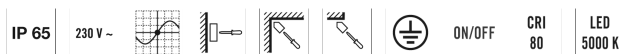
OFL SUN LED 50W 5 K WH

Item number

EL10810251

GTIN

4015120810251



Product description

- LED spotlight with high-quality aluminium die-cast housing
- 50 W LED luminous efficiency corresponds to 240 W light bulb, light colour approx. 5000 K white
- High light yield of 90 lm/W, excellent colour rendering index Ra 80

Technical data

GENERAL	
Conformity	CE, RoHS, WEEE
warranty	3-year
MOUNTING	
Installation type	Surface mounting
Mounting location	Wall
HOUSING	
Dimensions	Length 252 mm x Width 227 mm x Height/Depth 86 mm
Weight	1740 g
Material	Aluminium and UV-stabilised plastic
Protection type	IP 65
Permissible ambient temperature	-25 °C...+50 °C
Colour	white, similar to RAL 9016
Terminal	2,5 mm ² / 1,5 mm ²

ELECTRICAL VERSION	
Protection class	I
Nominal voltage	230 - 230 V / 50 Hz
LIGHT	
Diffusor	transparent
Light emission	direkt
Beam angle	110 °
Flicker factor	<20 %
Rated output	45 W
Luminous Flux (light)	5630 lm
Luminous efficacy	125 lm/W
LED service life	L80B50 = 50.000 h
Colour temperature	5000 K
Colour rendering index Ra	> 80
Energy efficiency class	A++ to A

Accessories

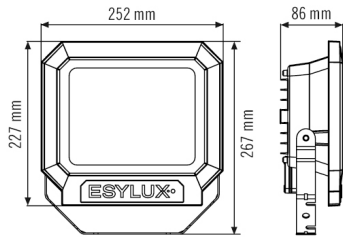
Product designation	Item number	GTIN
Wall Arm 700 WH	EL10810527	4015120810527
Ground Spike WH	EL10810541	4015120810541

DATA SHEET

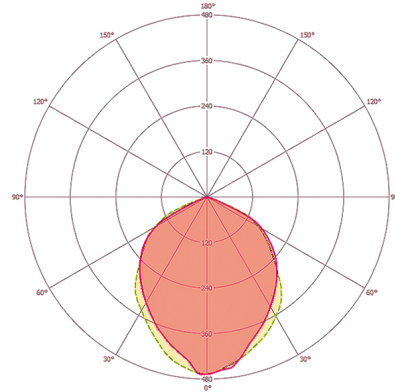
OFL SUN LED 50W 5K white

Order description	Item number	GTIN
OFL SUN LED 50W 5 K WH	EL10810251	4015120810251

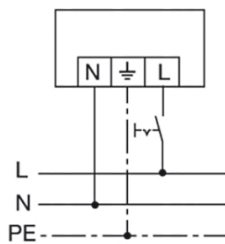
Scale drawing



Light distribution



Circuit diagram



Standard operation with on/off switch

Energy Conservation Solutions Pty Ltd
Exclusive Distributor for ESYLUX in Australia Locations:
VIC/TAS, NSW, QLD, ACT, SA/NT & WA
Phone: **1300 306 136**
For contact details visit: www.ecs.net.au