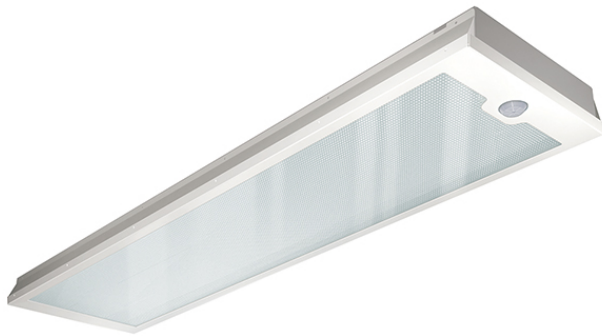


DATA SHEET

Order description	Item number	GTIN
PNLCEL14030830WHCP0000000	EQ10126581	4015120126581



Product description

- LED light with prismatic (CRYSTAL) cover (diffuser)
- Can be used as a panel light for ceiling systems with concealed or visible mounting rails for system dimensions 1200 x 300 mm (please note any special features and restrictions of the ceiling system manufacturer)
- LED output 30 W
- Integrated ballast (on/off), installation without further accessories
- incl. presence detector
- Colour temperature approx. 3000 K (warm white)

Technical data

GENERAL	
Conformity	CE, RoHS, WEEE
warranty	5-year
MOUNTING	
Installation type	Recessed mounting
Mounting location	Ceiling
Installation dimension	Installation length 1200 mm x Installation width 300 mm x Installation depth 140 mm
HOUSING	
Dimensions	Length 1195 mm x Width 296 mm x Height/Depth 110 mm
Weight	4400 g
Material	Varnished steel
Surface finish	frosted
Protection type	IP 20
Permissible ambient temperature	0 °C...+40 °C
Relative humidity	5 - 93 %, non-condensing
Colour	white, similar to RAL 9003
Glow wire test in accordance with IEC 60695-2-10	650 °C - 30 s
ELECTRICAL VERSION	

Protection class	I
Nominal voltage	230 - 230 V / 50 Hz
LIGHT	
Diffusor	linear-prismatic / transparent
Light emission	direkt
Beam angle	90 °
Unified Glare Rating	≤ 19
Flicker factor	<3 %
Rated output	33 W
Luminous Flux (light)	4000 lm
Luminous efficacy	119 lm/W
LED service life	L70B50 = 100.000 h, L80B50 = 65.000 h, L90B50 = 30.000 h, L80B10 = 50.000 h
Colour temperature	3000 K
Colour rendering index Ra	> 80
Colour tolerance	SDCM <3
Color Quality Scale	> 80
Photobiological safety	Risk group 0
Energy efficiency class	A++ to A
SENSORS	
Detection range diagonally	8 m

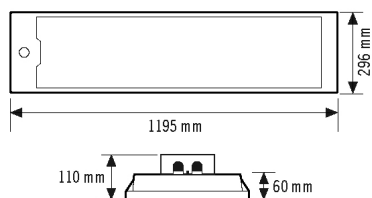
DATA SHEET

Order description	Item number	GTIN
PNLCEL14030830WHCP0000000	EQ10126581	4015120126581

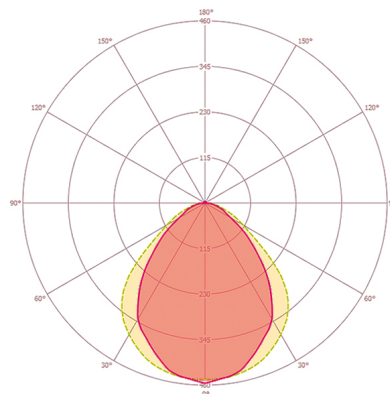
Accessories

Product designation	Item number	GTIN
PNL drop protection	EQ10121616	4015120121616

Scale drawing



Light distribution



Energy Conservation Solutions Pty Ltd

Exclusive Distributor for ESYLUX in Australia Locations:

VIC/TAS, NSW, QLD, ACT, SA/NT & WA

Phone: **1300 306 136**

For contact details visit: www.ecs.net.au