

## DATA SHEET

### Order description

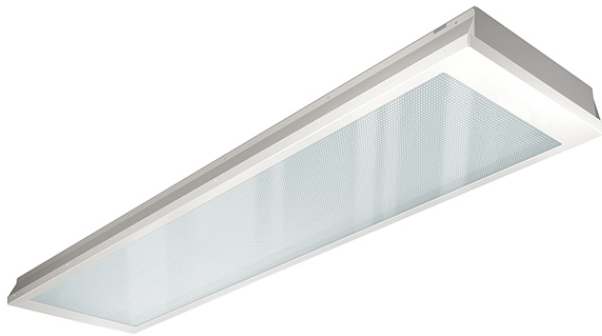
PNLCEL14040840WHC00000000

### Item number

EQ10126734

### GTIN

4015120126734



### Product description

- LED light with prismatic (CRYSTAL) cover (diffuser)
- Can be used as a panel light for ceiling systems with concealed or visible mounting rails for system dimensions 1200 x 300 mm (please note any special features and restrictions of the ceiling system manufacturer)
- LED output 40 W
- Integrated ballast (on/off), installation without further accessories
- Colour temperature approx. 4000 K (neutral white)

### Technical data

GENERAL	
Conformity	CE, RoHS, WEEE
warranty	5-year
MOUNTING	
Installation type	Recessed mounting
Mounting location	Ceiling
Installation dimension	Installation length 1200 mm x Installation width 300 mm x Installation depth 140 mm
HOUSING	
Dimensions	Length 1195 mm x Width 296 mm x Height/Depth 91 mm
Weight	4400 g
Material	Varnished steel
Surface finish	frosted
Protection type	IP 20
Permissible ambient temperature	0 °C...+40 °C
Relative humidity	5 - 93 %, non-condensing
Colour	white, similar to RAL 9003
Glow wire test in accordance with IEC 60695-2-10	650 °C - 30 s

ELECTRICAL VERSION	
Protection class	II
Nominal voltage	230 - 230 V / 50 Hz
LIGHT	
Diffuser	linear-prismatic / transparent
Light emission	direkt
Beam angle	90 °
Unified Glare Rating	≤ 19
Flicker factor	<3 %
Rated output	46 W
Luminous Flux (light)	5540 lm
Luminous efficacy	120 lm/W
LED service life	L70B50 = 85.000 h, L80B50 = 50.000 h, L90B50 = 25.000 h
Colour temperature	4000 K
Colour rendering index Ra	> 80
Colour tolerance	SDCM <3
Color Quality Scale	> 80
Photobiological safety	Risk group 1
Energy efficiency class	A++ to A

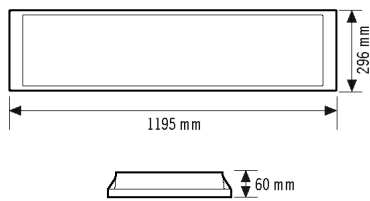
## DATA SHEET

Order description	Item number	GTIN
PNLCEL14040840WHC00000000	EQ10126734	4015120126734

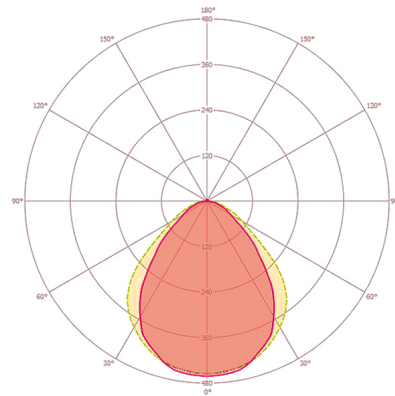
### Accessories

Product designation	Item number	GTIN
PNL drop protection	EQ10121616	4015120121616

### Scale drawing



### Light distribution



**Energy Conservation Solutions Pty Ltd**

Exclusive Distributor for ESYLUX in Australia Locations:

VIC/TAS, NSW, QLD, ACT, SA/NT & WA

Phone: **1300 306 136**

For contact details visit: [www.ecs.net.au](http://www.ecs.net.au)