

DATA SHEET

Order description

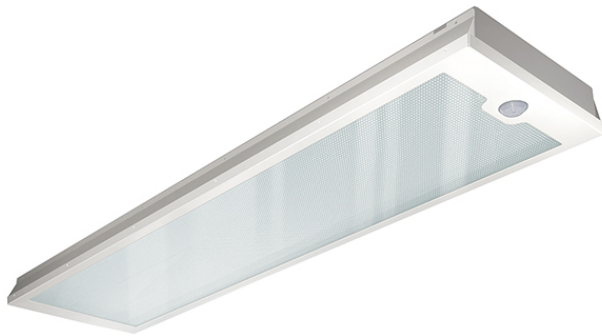
PNLCEL14060840WHCP0000000

Item number

EQ10127311

GTIN

4015120127311



Product description

- LED light with prismatic (CRYSTAL) cover (diffuser)
- Can be used as a panel light for ceiling systems with concealed or visible mounting rails for system dimensions 1200 x 300 mm (please note any special features and restrictions of the ceiling system manufacturer)
- LED output 60 W
- Integrated ballast (on/off), installation without further accessories
- incl. presence detector
- Colour temperature approx. 4000 K (neutral white)

Technical data

GENERAL	
Conformity	CE, RoHS, WEEE
warranty	5-year
MOUNTING	
Installation type	Recessed mounting
Mounting location	Ceiling
Installation dimension	Installation length 1200 mm x Installation width 300 mm x Installation depth 140 mm
HOUSING	
Dimensions	Length 1195 mm x Width 296 mm x Height/Depth 110 mm
Weight	4400 g
Material	Varnished steel
Surface finish	frosted
Protection type	IP 20
Permissible ambient temperature	0 °C...+40 °C
Relative humidity	5 - 93 %, non-condensing
Colour	white, similar to RAL 9003
Glow wire test in accordance with IEC 60695-2-10	650 °C - 30 s
ELECTRICAL VERSION	

Protection class	I
Nominal voltage	230 - 230 V / 50 Hz
LIGHT	
Diffusor	linear-prismatic / transparent
Light emission	direkt
Beam angle	90 °
Unified Glare Rating	≤ 19
Flicker factor	<3 %
Rated output	71 W
Luminous Flux (light)	7510 lm
Luminous efficacy	106 lm/W
LED service life	L80B10 = 50.000 h
Colour temperature	4000 K
Colour rendering index Ra	> 80
Colour tolerance	SDCM <3
Color Quality Scale	> 80
Photobiological safety	Risk group 1
Energy efficiency class	A++ to A
SENSORS	
Detection range diagonally	8 m

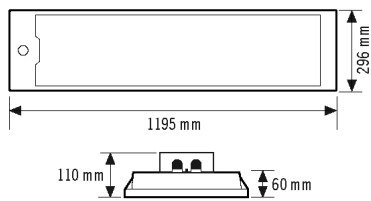
DATA SHEET

Order description	Item number	GTIN
PNLCEL14060840WHCP0000000	EQ10127311	4015120127311

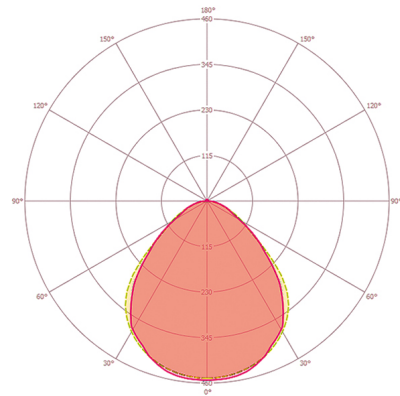
Accessories

Product designation	Item number	GTIN
PNL drop protection	EQ10121616	4015120121616

Scale drawing



Light distribution



Energy Conservation Solutions Pty Ltd

Exclusive Distributor for ESYLUX in Australia Locations:

VIC/TAS, NSW, QLD, ACT, SA/NT & WA

Phone: 1300 306 136

For contact details visit: www.ecs.net.au