



ARKTOS v.3

140 W LED Luminaire For Street Lighting



Order Code : 3125821
Product Code : ARK 140D 40CM00 WL 16K7 V.3

Product Data

Standard Features

Housing	: RAL 9018 and SW 306G painted aluminium injection monoblock housing
Diffuser	: Transparent glass with tempered
Optic	: Wide angle optic lens
IP Grade	: IP66
Illuminance Class	: ME4 Road types
Light Source	: Power LED

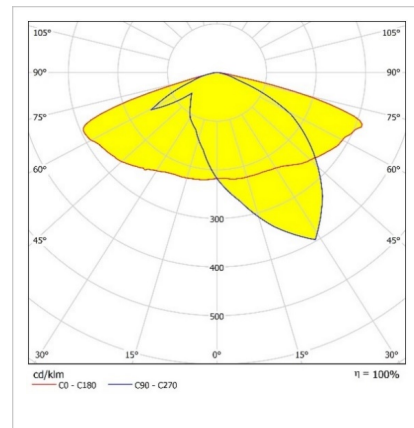
Optical & Electrical Features

Power Consumption	: 139.4 W
Final Luminous Flux	: 16714.5 lm
Efficacy	: 119.9 lm/W
Input Voltage	: 220-240 V AC
Frequency	: 50-60 Hz
Power Factor	: > 0,9
Surge Transient Protection	: 6 kV
Drive Current	: 700 mA
Correlated Color Temperature	: 4000K
Color Rendering Index	: >70

Other Features & Conditions

Operating Temperature Range	: -40 °C/+50 °C
Impact Resistance	: IK10
Led Life Time - L70	: > 118.000 hours @ Ta=50 °C

Photometric Curve



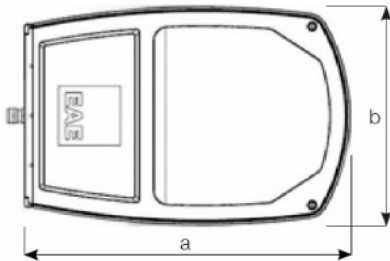
Optional Features

Correlated Color Temperatures	: 3000K, 5700K
DIM	: Dali, Dimko

ARKTOS v.3

140 W LED Luminaire For Street Lighting

3125821 ARK 140D 40CM00 WL 16K7 V.3



Dimensions (mm)

a	b	h
475	330	92,5

Weight (kg)

7,7

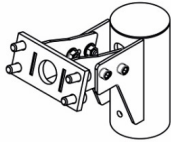
Ordering Code & Pole and Wall Connection

1	3056268	: Vertical installation post-top pole ø76
	3056269	: Vertical installation post-top pole ø60
	3056270	: Horizontal installation post-top pole ø76
2	3056271	: Horizontal installation post-top pole ø60
	3056272	: Horizontal installation post-top pole ø42
3	3056275	: Double side vertical installation post-top pole
4	3056274	: Wall bracket
5	3056278	: Corner bracket



Pole Connection

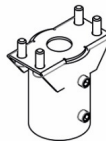
1



Vertical Installation Post-top Pole

Weight (kg) : 2,2

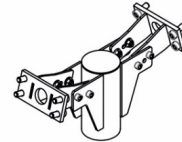
2



Horizontal Installation Post-top Pole

Weight (kg) : 0,5

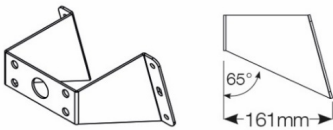
3



Double Side Vertical Installation Post-top Pole

Weight (kg) : 0,5

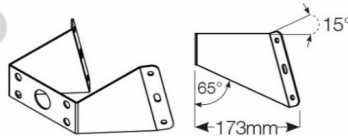
4



Wall Brackets

Weight (kg) : 2,1

5



Corner Brackets

Weight (kg) : 2,1

Energy Conservation Solutions Pty Ltd

Exclusive Distributor for EAE Lighting in Australia
Locations: VIC/TAS, NSW, QLD, ACT, SA/NT & WA

Phone: 1300 306 136

For contact details visit: www.ecs.net.au